



Commonwealth Department of  
Health and  
Aged Care

*Medicare  
benefits for  
the treatment  
of cleft lip  
and cleft  
palate  
conditions*

**1 November 2000**

**Commonwealth Department of Health and Aged Care**

**MEDICARE BENEFITS FOR  
THE TREATMENT OF  
CLEFT LIP AND CLEFT PALATE  
CONDITIONS**

**1 November 2000**

© Commonwealth of Australia 2000

ISBN 0 642 44695 4

This work is copyright. Apart from any use as permitted under the *Copyright Act 1968*, no part may be reproduced by any process without prior written permission from the Commonwealth available from AusInfo. Requests and inquiries concerning reproduction and rights should be addressed to the Manager, Legislative Services, AusInfo, GPO Box 1920, Canberra ACT 2601.

Publications Production Unit (Public Affairs, Parliamentary and Access Branch)  
Commonwealth Department of Health and Aged Care  
Canberra

Publication approval number 2421

**At the time of printing, the relevant legislation giving authority for the changes included in this edition of the book may be subject to the approval of Executive Council and Parliamentary scrutiny. This book is not a legal document, and, in cases of discrepancy, the legislation will be the source document for the payment of Medicare benefits.**



## **INTRODUCTION**

This book provides information on the arrangements for the payment of Medicare benefits for services rendered by eligible dental practitioners, orthodontists and oral surgeons for the treatment of cleft lip and cleft palate conditions. These arrangements operate under the Health Insurance Act 1973 (as amended).

Section 1 of this book contains explanatory notes on the Scheme together with an outline of the arrangements under which it operates, including addresses of the Health Insurance Commission and Cleft Lip and Cleft Palate Clinics.

The Schedule in Section 2 shows for each service the item number, description of the service, the Schedule fee and Medicare benefits. The fees shown in the Schedule are the fees which apply to services rendered on and after 1 November 2000.

This edition of the book has been printed for use by eligible dental practitioners, orthodontists, oral surgeons, the Health Insurance Commission and other interested authorities.

### **CHANGES INCLUDED IN THIS EDITION**

#### **General Fee Increase**

Schedule fees for services by eligible dental practitioners in the treatment of cleft lip and cleft palate conditions increase by 1.2% from 1 November 2000.

#### **Maximum Patient Gap**

With effect from 1 November 2000, the maximum patient gap between the Medicare Benefits Schedule fee and the benefit payable for out-of-hospital medical services increases to \$52.50.

#### **Special Arrangements - Transitional Period**

Where an item refers to a service in which treatment continues over a period of time in excess of one day and treatment commenced before 1 November 2000 and continues beyond that date, the general rule is that the 1 November 1999 level of fees and benefits would apply.



## CONTENTS

### SECTION 1 - OUTLINE OF SCHEME AND NOTES FOR GUIDANCE OF USERS

	Para No.	Page No.
<b>CA INTRODUCTION</b>		
Medicare benefits .....	CA.1	3
<b>CB DENTAL PRACTITIONER ELIGIBILITY</b>		
Eligible Practitioners .....	CB.1	3
<b>CC PATIENT ELIGIBILITY</b>		
Eligible Patients .....	CC.1	4
Visitors to Australia .....	CC.2	4
Health Care Expenses Incurred Overseas .....	CC.3	4
<b>CD SCHEDULE FEES AND MEDICARE BENEFITS</b>		
Schedule Fees and Medicare Benefits .....	CD.1	4
Where Benefits Not Payable .....	CD.2	5
Workers Compensation, Third Party Insurance, Damages etc .....	CD.3	5
Limiting Rule .....	CD.4	5
<b>CE PENALTIES</b>		
Penalties .....	CE.1	5
<b>CF BILLING PROCEDURES</b>		
Billing of Patient - Itemised Account .....	CF.1	5
Claiming Benefits .....	CF.2	6
Paid Accounts .....	CF.3	6
Unpaid Accounts .....	CF.4	6
Assignment of Benefits (Direct Billing) Arrangements .....	CF.5	6
Use of Medicare Cards in Direct Billing .....	CF.6	7
Assignment of Benefit Forms .....	CF.7	7
The Claim for Assigned Benefits .....	CF.8	8
Direct Bill Stationery .....	CF.9	8
Time limits Applicable to Lodgement of Claims .....	CF.10	8
<b>CG COMPILATION AND INTERPRETATION OF THE SCHEDULE</b>		
Compilation of the Schedule .....	CG.1	8
Principles of Interpretation .....	CG.2	8
Multiple Operation Rule .....	CG.3	8
Administration of Anaesthetics by Medical Practitioners .....	CG.4	8
Definitions .....	CG.5	8
Oral and Maxillofacial Surgical Services - Referral .....	CG.6	8
General and Prosthodontic Services .....	CG.7	9
Over-servicing .....	CG.8	9
<b>FACSIMILE OF "CERTIFICATION OF CLEFT CONDITION" FORM .....</b>		<b>10</b>
<b>FACSIMILE OF "PATIENT IDENTIFICATION CARD" FORM .....</b>		<b>11</b>
<b>ADDRESSES OF THE HEALTH INSURANCE COMMISSION .....</b>		<b>12</b>
<b>ADDRESSES OF CLEFT LIP AND CLEFT PALATE CLINICS .....</b>		<b>13</b>



## **SECTION 2 - SCHEDULE OF SERVICES**

### **GROUP C1 ORTHODONTIC SERVICES**

- Consultations.....	75001-75006	17
- Radiography.....	75009-75023	17
- Pre-surgical Infant Maxillary Arch Repositioning.....	75024-75027	17
- Dentition Treatment.....	75030-75050	17
- Jaw Growth Guidance.....	75051	18

### **GROUP C2 ORAL AND MAXILLOFACIAL SURGICAL SERVICES**

- Consultations.....	75150-75156	19
- Simple Extractions.....	75200-75206	19
- Surgical Extractions.....	75400-75415	19
- Other Surgical Procedures.....	75600-75615	20
- Other.....	75618-75621	20

### **GROUP C3 GENERAL AND PROSTHODONTIC SERVICES**

- Consultations.....	75800	21
- Prosthodontic Services.....	75803-75854	21

## **SECTION 1**

# **OUTLINE OF ARRANGEMENTS AND NOTES FOR GUIDANCE OF DENTAL PRACTITIONERS**



# OUTLINE OF CLEFT LIP AND CLEFT PALATE SCHEME AND NOTES FOR GUIDANCE

## CA. INTRODUCTION

### CA.1 Medicare Benefits

CA.1.1 The Medicare Benefits Schedule includes certain professional services in respect of the treatment of cleft lip and cleft palate conditions for which Medicare benefits are payable. These services are normally described as dental services. However, for the purposes of these Notes the word "medical" is to be interpreted to include "dental". The definition of professional service as contained in the Health Insurance Act provides that such a service must be "clinically relevant". A clinically relevant service means a service rendered by a medical or dental practitioner or optometrist that is generally accepted in the medical, dental or optometrical profession (as the case may be) as being necessary for the appropriate treatment of the patient to whom it is rendered.

CA.1.2 Medicare benefits are payable in respect of services listed in the Schedule (contained in Section 2 of this booklet), when the services are rendered by eligible dental practitioners to prescribed patients (see paragraph CC).

CA.1.3 The Schedule lists three categories of professional services:

Group C1	Orthodontic Services
Group C2	Oral and Maxillofacial Surgical Services
Group C3	General and Prosthodontic Services

## CB. DENTAL PRACTITIONER ELIGIBILITY

### CB.1 Eligible Practitioners

CB.1.1 In order to attract Medicare benefits, all treatment must be carried out by eligible dental practitioners who are resident in Australia. Practitioner eligibility is covered under the provisions of Subsection 3(1) of the Health Insurance Act 1973 (the Act).

CB.1.2 All State registered dental practitioners are entitled to perform simple extraction services covered by Items 75200-75206 listed in Group C2 of the Schedule (see paragraph CG.6 of these notes) and the general and prosthodontic services listed in Group C3 of the Schedule. Practitioners do not need to apply for accreditation or approval to perform these services.

CB.1.3 Dental practitioners who wish to be accredited for the purposes of Subsection 3(1) of the Act to perform those orthodontic services listed in Group C1 of the Schedule must submit an application for consideration by the Medical Benefits (Dental Practitioners) Advisory Committee. This Committee will recommend to the Minister the names of those dental practitioners who, in its opinion, should be accredited by the Minister to provide orthodontic services.

CB.1.4 The criteria used in granting accreditation for orthodontic services are that the dental practitioner is a practitioner who is either -

- registered by one of the State Dental Boards as an orthodontist; or
- can substantiate by qualifications and experience a level of competence in the field of orthodontics equivalent to the above criterion.

CB.1.5 Oral and maxillofacial surgeons approved by the Minister for the purposes of Subsection 3 (1) of the Act to carry out prescribed medical services (oral and maxillofacial surgery) contained in the Medicare Benefits Schedule book are entitled (without the need to apply) to perform those items of oral and maxillofacial surgery listed in Group C2 of this Schedule (on referral by an accredited orthodontist).

CB.1.6 The Medical Benefits (Dental Practitioners) Advisory Committee considers applications lodged by dental practitioners and recommends to the Minister the names of those dental practitioners who, in its opinion, should be approved by the Minister for the purposes of subsection 3(1) of the Act. Such dental practitioners must be State registered oral and maxillofacial surgeons in the State in which he/she is practising. In making its recommendations, the Committee may take into account a practitioner's training and experience in the field of oral and maxillofacial surgery and other factors which it may consider relevant.

CB.1.7 Practitioners who wish to be considered for approval or accreditation for the purposes of subsection 3(1) of the Act, should write to the Manager (Eligibility), Health Insurance Commission, PO Box 1001, Tuggeranong, ACT 2901 for an application form. Any enquiries may be directed to the Health Insurance Commission on (02) 6124 6753.

CB.1.8 Where the Minister decides that a dental practitioner should not be accredited for orthodontic services or approved for oral and maxillofacial surgical services, the dental practitioner may appeal to the Medical Benefits (Dental Practitioners) Appeals Committee, which is composed of dental practitioners who are not on the Advisory Committee. The Committee's address is the same as the Advisory Committee.

CB.1.9 Both the Advisory and the Appeals Committees are composed of dental practitioners nominated by the Australian Dental Association.

## **CC. PATIENT ELIGIBILITY**

### **CC.1 Eligible Patients**

**CC.1.1** To be eligible to claim benefits for Schedule services performed by eligible dental practitioners, a patient must satisfy the following criteria:

- (a) The patient must be an Australian resident or any other person or class of persons whom the Minister declares to be eligible. All eligible persons will be issued with a Medicare card on application as evidence of their eligibility.
- (b) The patient must be aged less than twenty-two years.
- (c) Under the provisions of Subsection 3(1) of the Health Insurance Act a patient must be a prescribed dental patient, i.e. a person in respect of whom a certificate has been issued by a medical practitioner or dental practitioner approved by the Minister, stating that the person is suffering from a cleft lip or cleft palate condition\*

\* Conditions for which a patient may be prescribed include the following:

- . Branchial Arch Syndrome
- . Craniosynostosis Syndrome
- . Apert's Syndrome
- . Pierre Sequence
- . Treacher-Collins' Syndrome
- . Golden Har Syndrome
- . Ectodermal Dysplasia

**CC.1.2** The identification of the cleft condition and the issue of the Certificate can be undertaken through a special cleft lip and palate clinic or by a medical or dental practitioner authorised for this purpose by the Minister. Cleft lip and palate clinics operate in at least one public hospital in each Australian State/Territory capital city. A list of these clinics and their addresses appears at the end of these Notes.

**CC.1.3** Practitioners whose patients are unable to attend the hospital clinic should send records of the cleft condition to the Clinic for identification of the condition and issue of the Certificate.

**CC.1.4** The Certificate is a formal document required under the provisions of the Act. Because the Certificate may have to last for up to twenty-two years, each eligible patient will also be issued with a plastic identification card. These cards, which are more durable than the paper Certificates, can be used by patients (or parents or guardians) to claim Medicare benefits. Facsimiles of the Certificate and card appear at the end of these Notes.

**CC.1.5** Patients are eligible for Medicare benefits for treatment received from the date of issue of their Certificate. Where treatment is required immediately after birth, practitioners should telephone a Clinic or approved practitioner so that a Certificate can be prepared which will be effective from that day.

### **CC.2 Visitors to Australia**

**CC.2.1** Medicare benefits are generally not payable to visitors to Australia or temporary residents. People visiting Australia specifically for medical or hospital treatment are not eligible for Medicare benefits.

### **CC.3 Health Care Expenses Incurred Overseas**

**CC.3.1** Medicare does not cover medical or hospital expenses incurred outside Australia.

## **CD. SCHEDULE FEES AND MEDICARE BENEFITS**

### **CD.1 Schedule Fees and Medicare Benefits**

**CD.1.1** Medicare benefits are based on fees determined for each Schedule service. These fees are shown in the Schedule in Section 2 of this Book. The fee is referred to in these notes as the "Schedule fee". The fee for any item listed in the Schedule is that which is regarded as being reasonable on average for that service having regard to usual and reasonable variations in the time involved in performing the service on different occasions and to reasonable ranges of complexity and technical difficulty encountered.

**CD.1.2** The Medicare benefits for each medical service are the amounts shown immediately after the Schedule fee. There are presently two levels of Medicare benefit payable, that is:-

- (i) for professional services rendered while hospital treatment (i.e., accommodation and nursing care) is provided to a patient who has been admitted to a hospital or day hospital facility (other than public patients), the level of Medicare benefit is 75% of the Schedule fee for each item with no maximum patient gap between the Medicare benefit and the Schedule fee. The Health Insurance Regulations provide that medical practitioners must indicate on their accounts, etc, where a medical service is rendered in these circumstances. This requirement will be met by placing the word "admitted patient" immediately preceding the description of each service or, alternatively, where an item number is used, by placing an asterisk "\*" directly after the item number for each service.
- (ii) for all other professional services, the Medicare benefit is 85% of the Schedule fee, or the Schedule fee less \$52.50 (indexed annually) whichever is the greater.

Where appropriate the calculated benefit has been rounded to the nearest higher 5 cents. However, in no circumstances will the benefit payable for any service exceed the amount of the fee actually charged for that service.

CD.1.3 It should be noted that the Health Insurance Act makes provision for private medical insurance to cover the "patient gap" (ie., the difference between the Medicare benefit and the Schedule fee) for services attracting benefit at the 75% level. Patients may insure with private health insurance organisations for the gap between the 75% Medicare benefit and the Schedule fee or for amounts in excess of the Schedule fee where the patient has an agreement with their health fund.

CD.1.4 Where it can be established that payments for out-of-hospital services of \$285.00 (indexed annually from 1 January) have been made for a family group or an individual during a calendar year in respect of the difference between the Medicare benefit and the Schedule fee, benefits will be paid for expenses incurred for professional services rendered during the rest of that year up to 100% of the Schedule fee. This does not apply to the Assignment of Benefit arrangements. A family group includes a spouse and dependent children under 16 years of age or dependent students under the age of 25.

## **CD.2 Where Medicare Benefits are not Payable**

CD.2.1 Medicare benefits are not payable in respect of a professional service in the following circumstances:-

- (i) where the medical expenses for the service are paid or payable to a recognised (public) hospital;
- (ii) where the service is a medical examination for the purposes of - life insurance, superannuation or provident account scheme, or admission to membership of a friendly society;
- (iii) where the service was rendered in the course of carrying out of mass immunisation.

CD.2.2 Unless the Minister otherwise directs, Medicare benefit is not payable in respect of a professional service where:-

- (a) the service has been rendered by or on behalf of, or under an arrangement with, the Commonwealth, a State or a local governing body or an authority established by a law of the Commonwealth, a law of a State or a law of an internal Territory;
- (b) the medical expenses were incurred by the employer of the person to whom the service was rendered;
- (c) the person to whom that service was rendered was employed in an industrial undertaking and that service was rendered to him for purposes connected with the operation of that undertaking; or
- (d) the service was a health screening service.

CD.2.3 The legislation empowers the Minister to make regulations to preclude the payment of Medicare benefits for professional services rendered in prescribed circumstances. Such regulations, however, may only be made in accordance with a recommendation made by the Medicare Benefits Advisory Committee.

CD.2.4 Benefits are not payable for items 75150 to 75621 unless the patient was referred in the manner outlined at paragraph CG.6.

## **CD.3 Workers' Compensation, Third Party Insurance, Damages etc.**

CD.3.1 From 1 February 1996, Medicare benefits are payable for medical expenses for professional services that are wholly covered by workers' compensation or damages under a Commonwealth or State or Territory law, except where a person has entered into a "reimbursement arrangement" with a compensation insurer. The normal billing arrangements apply in respect of services rendered.

CD.3.2 Once a settlement or judgement is made on a compensation claim, recovery of benefits is undertaken between the insurer or compensation payer, the compensable person and the Health Insurance Commission. The recovery arrangements do not impact on practitioners.

## **CD.4 Limiting Rule**

CD.4.1 In no circumstances will the benefit payable for a professional service exceed the fee charged for the service.

## **CE. PENALTIES**

### **CE.1 Penalties**

CE.1.1 Penalties of up to \$10,000 or imprisonment for up to five years may be imposed on any person who makes a statement (either orally or in writing) or who issues or presents a document that is false or misleading in a material particular and which is capable of being used in connection with a claim for benefits. In addition, any practitioner who is found guilty of such offences by a Court on or after 22 February 1986 shall be subject to an examination by a Medicare Participation Review Committee and may be counselled or reprimanded or may have services wholly or partially disqualified from the Medicare benefit arrangements.

CE.1.2 A penalty of up to \$1,000 or imprisonment for up to three months, or both, may be imposed on any person who obtains a patient's signature on a direct billing form without the necessary details having been entered on the form before signature or who fails to cause a copy of the completed form to be given to the patient.

## **CF. BILLING PROCEDURES**

### **CF.1 Billing of the Patient - Itemised Accounts**

CF.1.1 Where the practitioner bills the patient for medical services rendered, the patient needs a properly itemised account/receipt to enable a claim to be made for Medicare benefits.

CF.1.2 Under the provisions of the Health Insurance Act and Regulations, Medicare benefits are not payable in respect of a professional service unless there is recorded on the account setting out the fee for the service or on the receipt for the fee in respect of the service, the following particulars:-

- (i) Patient's name;
- (ii) The date on which the professional service was rendered;
- (iii) A description of the professional service sufficient to identify the item that relates to that service, including an indication where the service is rendered to a person while hospital treatment is provided in a hospital or day-hospital facility (other than a Medicare hospital patient), that is, the words (i.e., accommodation and nursing care) "admitted patient" immediately preceding the description of the service or an asterisk "\*" directly after an item number where used;
- (iv) The name and practice address or name and provider number of the practitioner who actually rendered the service; (Where the practitioner has more than one practice location recorded with the Health Insurance Commission, the provider number used should be that which is applicable to the practice location at or from which the service was given).

CF.1.3 Each account must also carry a certification by the accredited dental practitioner that:-

- (i) the patient's eligibility certificate or identification card has been sighted (this can be done by quoting the number on the identification card); and
- (ii) the service was required for the treatment associated with the cleft condition.

CF.1.4 Where a practitioner wishes to apportion the total fee between the appropriate professional fee for the particular service and any balance outstanding in respect of services rendered previously, the practitioner should ensure that the balance is described in such a way (e.g. balance of account) that it cannot be mistaken as being a separate service. In particular no item number should be shown against the balance.

CF.1.5 Only one original itemised account should be issued in respect of any one medical service and any duplicates of accounts or receipts should be clearly marked "duplicate" and should be issued only where the original has been lost. Duplicates should not be issued as a routine system for "accounts rendered".

## **CF.2 Claiming Benefits**

CF.2.1 The patient, upon receipt of a practitioner's account, has two courses open for paying the account and receiving benefits as outlined below.

## **CF.3 Paid Accounts**

CF.3.1 The patient may pay the account and subsequently present the receipt at a Medicare customer service centre for assessment and payment of the Medicare benefit in cash.

CF.3.2 In these circumstances, where a claimant personally attends a customer service centre, the claimant is not required to complete a Medicare Patient Claim Form (PC1).

CF.3.3 In circumstances where the claimant is seeking a cheque payment of the Medicare benefit or is arranging for an agent to receive the Medicare benefit on the claimant's behalf, completion of a Medicare Patient Claim Form (PC1) is still required.

## **CF.4 Unpaid Accounts**

CF.4.1 Where the patient has not paid the account, the unpaid account may be presented to Medicare with a Medicare claim form. In this case Medicare will forward to the claimant a benefit cheque made payable to the practitioner.

CF.4.2 It will be the patient's responsibility to forward the cheque to the practitioner and make arrangements for payment of the balance of the account if any. "Pay doctor" cheques involving Medicare benefits cannot be sent direct to practitioners or to patients at a practitioner's address (even if requested by the patient to do so). "Pay doctor" cheques will be forwarded to the claimant's last known address.

CF.4.3 When issuing a receipt to a patient in respect of an account that is being paid wholly or in part by a Medicare "pay doctor" cheque the practitioner should indicate on the receipt that a "Medicare" cheque for \$.....was involved in the payment of the account.

## **CF.5 Assignment of Benefits (Direct-Billing) Arrangements**

CF.5.1 Under the Health Insurance Act the Assignment of Benefit (direct-billing) facility for professional services is available to all persons in Australia who are eligible for benefit under the Medicare program. This facility is NOT confined to pensioners or people in special need. If a practitioner direct-bills, the practitioner undertakes to accept the relevant Medicare benefit as full payment for the service. Additional charges for that service (irrespective of the purpose or title of the charge) cannot be raised against the patient. Under these arrangements:-

- The patient's Medicare card number must be quoted on all direct-bill forms for that patient.
- The basic forms provided are loose leaf to enable the patient details to be imprinted from the Medicare card.
- The forms include information required by Regulations under Subsection 19(6) of the Health Insurance Act.
- The practitioner must cause the particulars relating to the professional service to be set out on the assignment form before the patient signs the form and cause the patient to receive a copy of the form as soon as practicable after the patient signs it.

Where a patient is unable to sign the assignment form the signature of the patient's parent, guardian or other responsible person (other than the practitioner, practitioner's staff, hospital proprietor, hospital staff, residential aged care facility proprietor or residential aged care facility staff) is acceptable. The reason the patient is unable to sign should also be stated. In the absence of a "responsible person" the patient signature section should be left blank and in the section headed "Practitioner's Use" or on the back of the assignment form, an explanation should be given as to why the patient was unable to sign (e.g. unconscious, injured hand, etc.) and this note should be signed or initialled by the doctor. If in the opinion of the practitioner the reason is of such a "sensitive" nature that revealing it would constitute an unacceptable breach of patient confidentiality or unduly embarrass or distress the recipient of the patient's copy of the assignment of benefits form, a concessional reason "due to medical condition" to signify that such a situation exists may be substituted for the actual reason. However, this should not be used routinely and in most cases it is expected that the reason given will be more specific.

**CF.5.2** The administration of the direct-billing arrangements under Medicare as well as the payment of Medicare benefits on patient claims is the responsibility of the Health Insurance Commission. Any enquires in regard to these matters should therefore be directed to the Commission's Medicare offices or enquiry points.

**CF.5.3** Under Medicare any eligible dental practitioner can accept assignment of benefit and direct-bill for any eligible person.

#### **CF.6 Use of Medicare Cards in Direct Billing**

**CF.6.1** An eligible person who applies to enrol for Medicare benefits (using a Medicare Enrolment/Amendment Application) will be issued with a uniquely numbered Medicare card which shows the Medicare card number, the patient identification number (reference number), the applicant's first given name, initial of second given name, surname and an effective "valid to" date. These cards may be issued on an individual or family basis. Up to 5 persons may be listed on the one Medicare card, and up to 9 persons may be listed under the one Medicare card number.

**CF.6.2** The Medicare card plays an important part in direct billing as it can be used to imprint the patient details (including Medicare number) on the basic direct-billing forms. A special Medicare imprinter has been developed for this purpose and is available free of charge, on request, from Medicare.

**CF.6.3** The patient details can of course be entered on the direct-bill forms by hand, but the use of a card to imprint patient details assists practitioners and ensures accuracy of information. The latter is essential to ensure that the processing of a claim by Medicare is expedited.

**CF.6.4** The Medicare card number must be quoted on direct-bill forms. If the number is not available, then the assignment of benefit facility should not be used. To do so would incur a risk that the patient is not eligible and Medicare benefits not payable.

**CF.6.5** Where a patient presents without a Medicare card and indicates that he/she has been issued with a card but does not know the details, the practitioner may contact a Medicare telephone enquiry number to obtain the number.

#### **CF.7 Assignment of Benefit Forms**

**CF.7.1** To meet varying requirements the following types of stationery are available from Medicare. Note that these forms are approved forms under the Health Insurance Act, and no other forms can be used to assign benefits without the approval of the Health Insurance Commission.

- (a) *Form DB2*. This form is used to assign benefits for services other than requested pathology. It is loose leaf for imprinting and comprises a throw away cover sheet (after imprinting), a Medicare copy, a Patient copy and a Practitioner copy.
- (b) *Form DB4*. Is a continuous stationery version of Form DB2, and has been designed for use on most office accounting machines.

#### **CF.8 The Claim for Assigned Benefits (Form DB1, DB1H)**

**CF.8.1** Practitioners who accept assigned benefits must claim on Medicare using Form DB1 or DB1H, the Claim for Assigned Benefits. The DB1H form should be used where services are rendered to persons while hospital treatment is provided in a hospital or day hospital facility (other than Medicare hospital patients). Both forms have been designed to enable benefit for a claim to be directed to a practitioner other than the one who rendered the services. The facility is intended for use in situations such as where a short term locum is acting on behalf of the principal practitioner and setting the locum up with a provider number and pay-group link for the principal practitioner's practice is impractical. Practitioners should note that this facility cannot be used to generate payments to or through a person who does not have a provider number.

**CF.8.2** The claim form must be accompanied by the Assignment forms to which the claim relates.

**CF.8.3** Forms DB1 and DB1H are also loose leaf similar to form DB2 to enable imprinting of practitioner details using the special Medicare imprinter. For this purpose, practitioner cards showing the practitioner's name, practice address and provider number are available from Medicare on request.



**CF.9 Direct-Bill Stationery**

CF.9.1 Medical practitioners and eligible dental practitioners wishing to direct-bill may obtain direct-bill stationery by contacting any Medicare Office. Information on the completion of the forms and direct-bill procedures are provided with the forms. Information on direct-billing is available from any Medicare office.

**CF.10 Time Limits Applicable to Lodgement of Claims for Assigned Benefits**

CF.10.1 A time limit of six months applies to the lodgement of claims with Medicare under the direct-billing (assignment of benefit) arrangements. This means that Medicare benefits are not payable for any service where the service was rendered more than six months earlier than the date the claim was lodged with Medicare.

CF.10.2 Provision exists whereby in certain circumstances (e.g. hardship cases), the Minister may waive the time limits. Special forms for this purpose are available, if required, from the processing centre to which assigned claims are directed.

**CG. COMPILATION AND INTERPRETATION OF THE SCHEDULE**

**CG.1 Compilation of the Schedule**

CG.1.1 Section 2 of this Book lists the item number, description of medical service, the Schedule fee for those services in the treatment of cleft lip and cleft palate conditions for which Medicare benefits are payable and the Medicare benefits.

CG.1.2 The prescribed services have been grouped according to the general nature of the services: orthodontic, oral surgical and general and prosthodontic.

**CG.2 Principles of Interpretation**

CG.2.1 Each professional service listed in the Schedule is a complete medical service in itself. Where a service is rendered partly by one practitioner and partly by another, only the one amount of benefit is payable.

**CG.3 Multiple Operation Rule**

CG.3.1 The Schedule fee for two or more operations performed on a patient on the one occasion are calculated by the following rule:-

100% for the item with the greatest Schedule fee, plus 50% for the item with the next greatest Schedule fee, plus 25% for each other item.

- NOTE:
1. Fees so calculated which result in a sum which is not a multiple of 5 cents are taken to the next higher multiple of 5 cents.
  2. Where two or more operations performed on the one occasion have fees which are equal, one of these amounts shall be treated as being greater than the other or others of those amounts.
  3. The Schedule fee for benefits purposes is the aggregate of the fees calculated in accordance with the above formula.

CG.3.2 The above rule does not apply to an operation which is one of two or more operations performed under the one anaesthetic on the same patient by different dental practitioners unless either practitioner assists the other. In this case, the fees and benefits specified in the Schedule apply. For these purposes the term "operation" includes items 75200- 75615.

CG.3.3 If the operation comprises a combination of procedures which are commonly performed together and for which a specific combined item is provided in the Schedule, it is regarded as the one item and service in applying the multiple operation rule.

**CG.4 Administration of Anaesthetics by Medical Practitioners**

CG.4.1 When a medical practitioner administers an anaesthetic in connection with a dental procedure prescribed for the payment of Medicare benefits (and the procedure has been performed by an eligible dental practitioner), Medicare benefits are payable for the administration of the anaesthetic on the same basis as if the procedure had been rendered by a medical practitioner.

CG.4.2 To ascertain the Schedule fee for the anaesthetic, medical practitioners should refer to Group T6, Subgroup 3 of the Medicare Benefits Schedule Book.

**CG.5 Definitions**

CG.5.1 Orthodontic treatment planning is defined as the measurement and analysis of the face and jaws and occlusion providing a diagnosis and planned prescription of appliances and treatment required.

CG.5.2 Study models are defined as orthodontic plaster casts of the upper and lower teeth and alveolar processes.

**CG.6 Oral and Maxillofacial Surgical Services - Referral (75150 - 75621)**

CG.6.1 Benefits are payable for items 75150 to 75621 only where the service has been rendered to a patient who has been referred by letter of Referral by a dental practitioner accredited for orthodontic services.

**CG.7 General and Prosthodontic Services (75800)**

**CG.7.1** Item number 75800 refers to a consultation by a dentist for prevention and prophylaxis and includes such services as dietary advice, oral hygiene and fluoride treatment.

**CG.8 Over-servicing**

**CG.8.1** Over-servicing must be avoided. In the case of denture services, examples of over-servicing might be:-

- Unjustifiably frequent replacement of dentures;
- Provision of new dentures when relining or re-modelling of an existing prosthesis would meet the clinical need;
- Provision of metal dentures where an acrylic denture would meet the clinical need.

**CG.8.2** The Schedule includes an item for metal dentures to allow for the provision of a precise, long-term prosthesis. The item is not intended for use during the period of growth, where prostheses must be replaced or altered frequently, unless there is some definite and extraordinary clinical requirement.

# Medicare

## Certification of Cleft Condition Prescribed Dental Patient

- Please print
- Original to be retained by the patient
- Pink Copy to be posted to the Health Insurance Commission
- Green Copy to be retained by Clinic/Practitioner

Full name of practitioner

I

Address of practice

of

being an approved medical practitioner or dental practitioner as referred to in the definition of 'prescribed dental patient' in sub-section 3(1) of the *Health Insurance Act 1973* certify that:

Given names

Family name

(full name of patient)

of

Postcode

(full address)

is suffering from a

cleft lip condition

cleft palate condition

cleft lip and cleft palate condition

Signature of approved Medical Practitioner or Dental Practitioner

Date / /

## Certificate of date of birth of patient To be completed by Parent/Guardian (or Patient, if 18 years or over)

Name of patient

I certify that

was born on the

day of

19

Name of person  
signing

Medicare Number

Relationship to  
patient

Signature

Date / /

**This copy to be retained by Patient**

# FACSIMILE OF PATIENT IDENTIFICATION CARD



## Prescribed Patient Card Cleft Lip and Cleft Palate Scheme

Family Name

Given Name

Expiry Date

Cleft Palate Number

Medicare Card Number

Date

If found, please return to Health Insurance Commission  
PO Box 1001 Tuggeranong 2901 A.C.T.

NP-172 0496

**The holder of this card is a  
"prescribed dental patient" as  
defined under sub-section 3(1) of  
the Health Insurance Act 1973.**

## **HEALTH INSURANCE COMMISSION**

**(Postal : Medicare, GPO Box 9822, in each Capital City, Phone Enquiries on 132150)**

### **NEW SOUTH WALES**

State Headquarters  
33 Erskine Street  
SYDNEY 2000                      Tel (02) 9895 3333

### **VICTORIA**

Medibank House  
460 Bourke Street  
MELBOURNE 3000                Tel (03) 9605 7333

### **QUEENSLAND**

State Headquarters  
444 Queen Street  
BRISBANE 4000                Tel (07) 3004 5333

### **SOUTH AUSTRALIA**

State Headquarters  
209 Greenhill Road  
EASTWOOD 5063                Tel (08) 8274 9333

### **WESTERN AUSTRALIA**

State Headquarters  
11th Floor  
Bank West Tower  
108 St. George's Terrace  
PERTH 6000                    Tel (08) 9214 8333

### **TASMANIA**

State Headquarters  
242 Liverpool Street  
HOBART 7000                    Tel (03) 6215 5333

### **AUSTRALIAN CAPITAL TERRITORY**

134 Reed Street  
TUGGERANONG 2901            Tel (02) 62146333

### **NORTHERN TERRITORY**

As per South Australia

## CLEFT LIP AND CLEFT PALATE CLINICS

### NEW SOUTH WALES

Dental Department  
New Children's Hospital  
Cnr Hawkesbury Rd & Hainsworth Street  
WESTMEAD 2145 (02) 9845 2582

Orthodontic Department  
United Dental Hospital of Sydney  
2 Chalmers Street  
SURRY HILLS 2010 (02) 9293 3388

Children's Outpatients  
Sydney Children's Hospital  
High Street  
RANDWICK 2031 (02) 9382 1470

Paediatric Outpatient's Dept.  
John Hunter Children's Hospital  
Locked Bag 1  
Hunter Regional Mail Centre NEWCASTLE 2310 (02)  
4921 3750

### VICTORIA

Cleft Clinic  
Monash Medical Centre  
246 Clayton Road  
CLAYTON 3168 (03) 9594 2415

Director  
Dental Clinic  
Department of Dentistry  
Royal Children's Hospital  
Flemington Road  
PARKVILLE 3052 (03) 9345 5344

### QUEENSLAND

Children's Oral Health Service  
Level G, Coles Health Services Centre  
Royal Children's Hospital  
Herston Road  
HERSTON 4029 (07) 3253 1025

Combined Cleft Lip & Palate Clinic  
Townsville Cleft Palate Clinic  
Special Clinics  
Townsville General Hospital  
Eyre Street  
NORTH WARD QLD 4810 (07) 4781 9304

Children's Specialist Clinic  
Mater Children's Hospital  
Annerley Road  
SOUTH BRISBANE QLD 4101 (07) 3840 8180

### SOUTH AUSTRALIA

Director  
Dental Clinic  
Paediatric Women and Children's Hospital  
King William Road  
NORTH ADELAIDE 5006 (08) 8204 7379

Dental Clinic  
Flinders Medical Centre  
BEDFORD PARK 5042 (08) 8204 4188

### WESTERN AUSTRALIA

Dental Unit  
Princess Margaret Hospital  
Thomas Street  
SUBIACO 6008 (08) 9340 8342

### TASMANIA

Oral and Maxillofacial Unit  
Royal Hobart Hospital  
Liverpool Street  
HOBART 7000 (03) 6222 8413

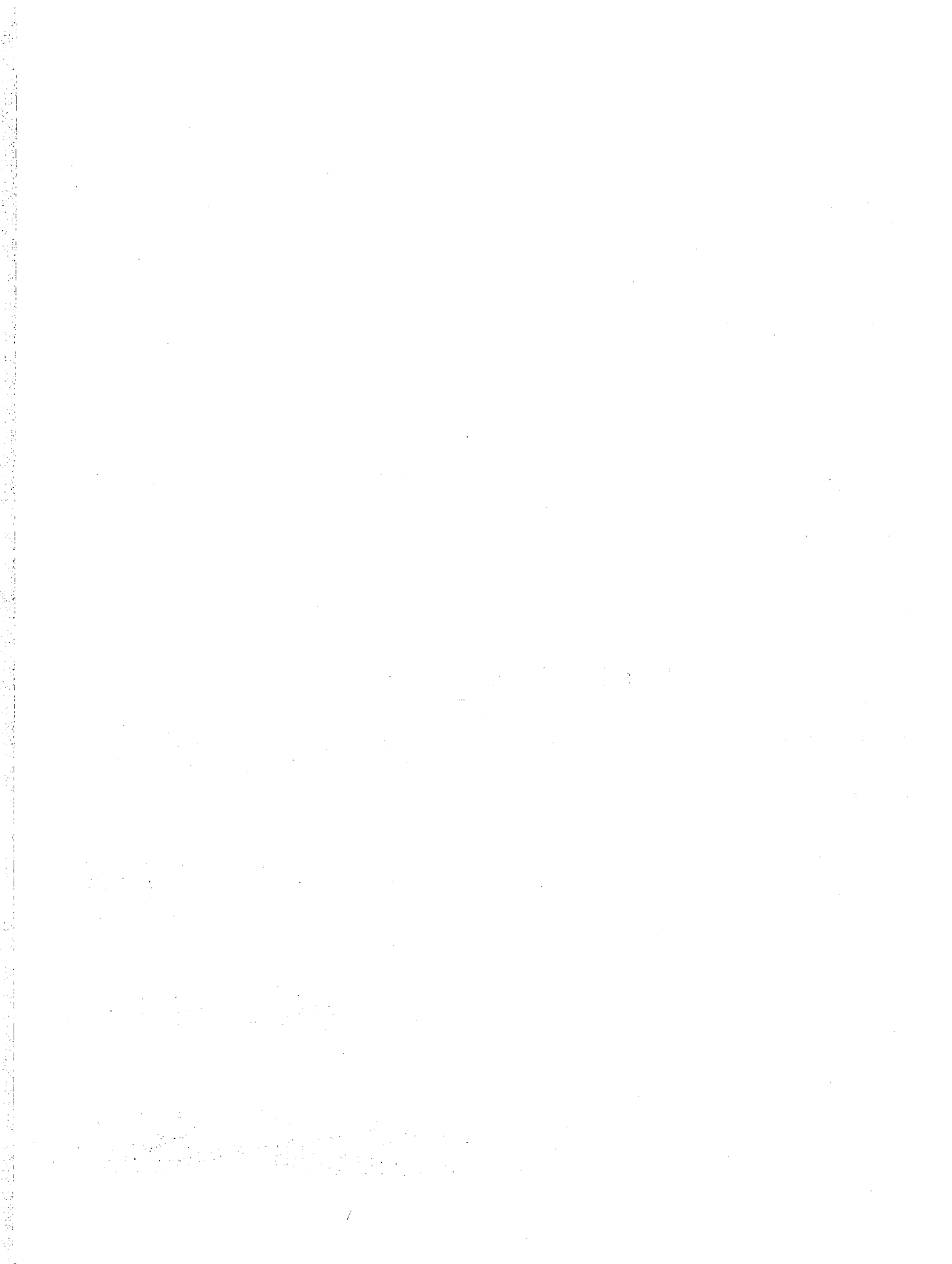
### AUSTRALIAN CAPITAL TERRITORY

School Dental Clinic  
ACT Board of Health  
Cnr Alinga and Moore Streets  
CANBERRA CITY 2600 (02) 6205 5111  
(Enquiries only)

### NORTHERN TERRITORY

Senior Dentist Urban  
Northern Territory Department of Health  
Dental Clinic  
48 Mitchell Street  
DARWIN NT 0800 (08) 8981 9688

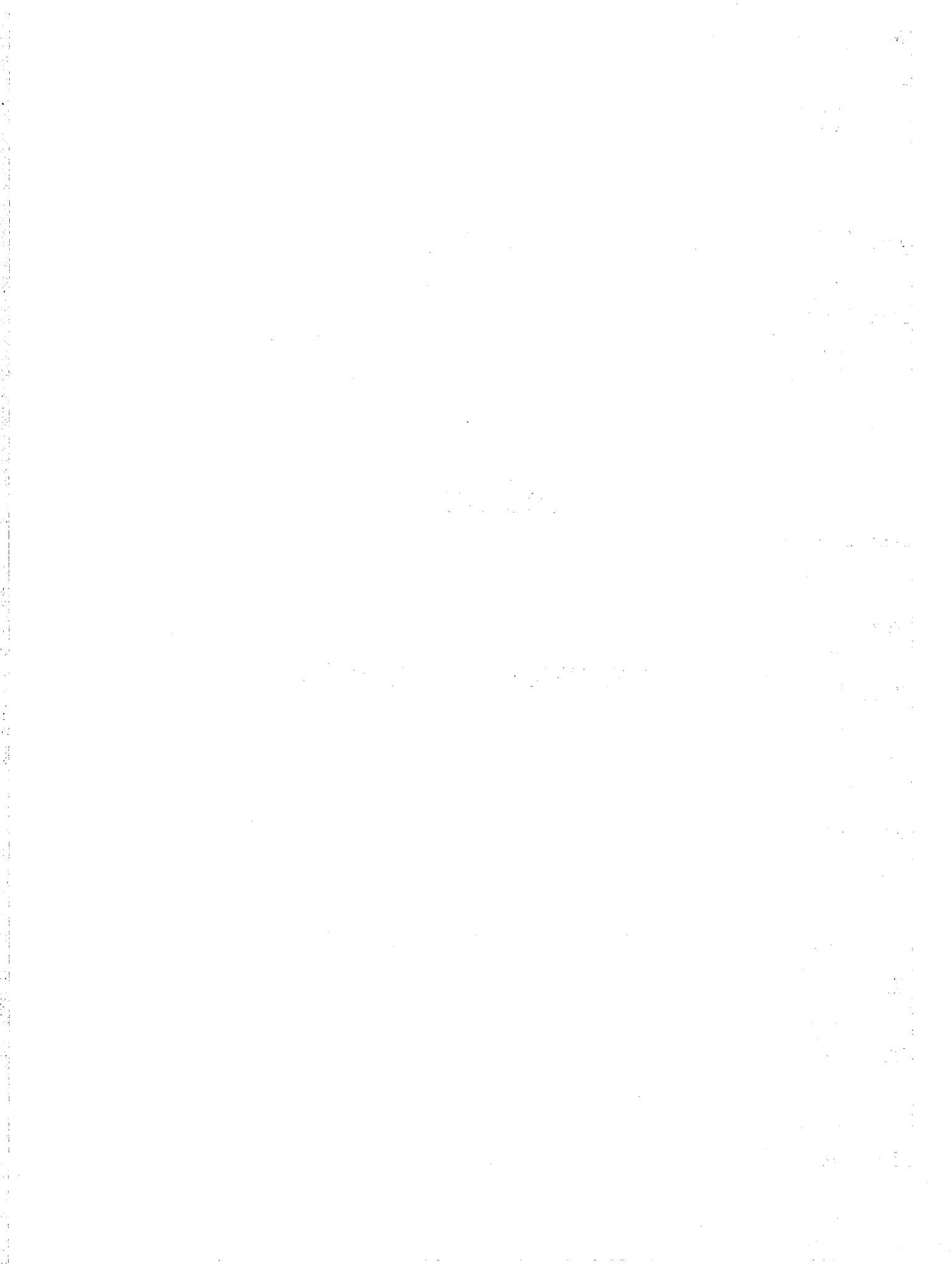
Northern Territory Department of Health  
Dental Clinic  
Community Health Centre  
Flynn Drive  
ALICE SPRINGS 0870 (08) 8951 6713



## **SECTION 2**

### **SCHEDULE OF SERVICES**





## GROUP C1 - ORTHODONTIC SERVICES

*Note: In this Group, benefit is only payable where the service has been rendered to a patient by a dental practitioner who has been accredited by the Minister to provide orthodontic services, except for the services covered by Items 75009-75023 which may also be rendered by a dental practitioner approved by the Minister to provide oral surgical services.*

## CONSULTATIONS

75001	INITIAL PROFESSIONAL ATTENDANCE in a single course of treatment by an accredited orthodontist Fee: \$66.60                      Benefit: 75% = \$49.95                      85% = \$56.65
75004	PROFESSIONAL ATTENDANCE by an accredited orthodontist subsequent to the first professional attendance by the orthodontist in a single course of treatment Fee: \$33.40                      Benefit: 75% = \$25.05                      85% = \$28.40
75006	PRODUCTION OF DENTAL STUDY MODELS (not being a service associated with a service to which item 75004 applies) prior to provision of a service to which: (a) item 75030, 75033, 75034, 75036, 75037, 75039, 75045 or 75051 applies; or (b) an item in Group T8 or Groups 03 to 09 applies; in a single course of treatment Fee: \$59.35                      Benefit: 75% = \$44.55                      85% = \$50.45

## RADIOGRAPHY

75009	ORTHODONTIC RADIOGRAPHY orthopantomography (panoramic radiography), including any consultation on the same occasion Fee: \$53.05                      Benefit: 75% = \$39.80                      85% = \$45.10
75012	ORTHODONTIC RADIOGRAPHY ANTEROPOSTERIOR CEPHALOMETRIC RADIOGRAPHY with cephalometric tracings OR LATERAL CEPHALOMETRIC RADIOGRAPHY with cephalometric tracings including any consultation on the same occasion Fee: \$84.05                      Benefit: 75% = \$63.05                      85% = \$71.45
75015	ORTHODONTIC RADIOGRAPHY ANTEROPOSTERIOR AND LATERAL CEPHALOMETRIC RADIOGRAPHY, with cephalometric tracings including any consultation on the same occasion Fee: \$115.65                      Benefit: 75% = \$86.75                      85% = \$98.35
75018	ORTHODONTIC RADIOGRAPHY ANTEROPOSTERIOR AND LATERAL CEPHALOMETRIC RADIOGRAPHY, with cephalometric tracings and orthopantomography including any consultation on the same occasion Fee: \$147.30                      Benefit: 75% = \$110.50                      85% = \$125.25
75021	ORTHODONTIC RADIOGRAPHY hand-wrist studies (including growth prediction) including any consultation on the same occasion Fee: \$180.65                      Benefit: 75% = \$135.50                      85% = \$153.60
75023	INTRAORAL RADIOGRAPHY - single area, periapical or bitewing film Fee: \$36.15                      Benefit: 75% = \$27.15                      85% = \$30.75

## PRESURGICAL INFANT MAXILLARY ARCH REPOSITIONING

75024	PRESURGICAL INFANT MAXILLARY ARCH REPOSITIONING including supply of appliances and all adjustments of appliances and supervision - WHERE 1 APPLIANCE IS USED Fee: \$467.25                      Benefit: 75% = \$350.45                      85% = \$416.35
75027	PRESURGICAL INFANT MAXILLARY ARCH REPOSITIONING including supply of appliances and all adjustments of appliances and supervision WHERE 2 APPLIANCES ARE USED Fee: \$640.65                      Benefit: 75% = \$480.50                      85% = \$589.75

## DENTITION TREATMENT

75030	MAXILLARY ARCH EXPANSION not being a service associated with a service to which item 75039, 75042, 75045 or 75048 applies, including supply of appliances, all adjustments of the appliances, removal of the appliances and retention Fee: \$570.45                      Benefit: 75% = \$427.85                      85% = \$519.55
-------	---

ORTHODONTIC		ORTHODONTIC
75033	MIXED DENTITION TREATMENT - incisor alignment using fixed appliances in maxillary arch, including supply of appliances, all adjustments of appliances, removal of the appliances and retention <b>Fee:</b> \$934.95 <b>Benefit:</b> 75% = \$701.25      85% = \$884.05	
75034	MIXED DENTITION TREATMENT - incisor alignment with or without lateral arch expansion using a removable appliance in the maxillary arch, including supply of appliances, associated adjustments and retention <b>Fee:</b> \$475.90 <b>Benefit:</b> 75% = \$356.95      85% = \$425.00	
75036	MIXED DENTITION TREATMENT - lateral arch expansion and incisor alignment using fixed appliances in maxillary arch, including supply of appliances, all adjustments of appliances, removal of appliances and retention <b>Fee:</b> \$1,291.45 <b>Benefit:</b> 75% = \$968.60      85% = \$1,240.55	
75037	MIXED DENTITION TREATMENT - lateral arch expansion and incisor correction - 2 arch (maxillary and mandibular) using fixed appliances in both maxillary and mandibular arches, including supply of appliances, all adjustments of appliances, removal of appliances and retention <b>Fee:</b> \$1,626.55 <b>Benefit:</b> 75% = \$1,219.95      85% = \$1,575.65	
75039	PERMANENT DENTITION TREATMENT SINGLE ARCH (mandibular or maxillary) TREATMENT (correction and alignment) using fixed appliances, including supply of appliances - initial 3 months of active treatment <b>Fee:</b> \$432.25 <b>Benefit:</b> 75% = \$324.20      85% = \$381.35	
75042	PERMANENT DENTITION TREATMENT - SINGLE ARCH (mandibular or maxillary) TREATMENT (correction and alignment) using fixed appliances, including supply of appliances - each 3 months of active treatment (including all adjustments and maintenance and removal of the appliances) after the first for a maximum of a further 33 months <b>Fee:</b> \$161.65 <b>Benefit:</b> 75% = \$121.25      85% = \$137.45	
75045	PERMANENT DENTITION TREATMENT 2 ARCH (mandibular and maxillary) TREATMENT (correction and alignment) using fixed appliances, including supply of appliances - initial 3 months of active treatment <b>Fee:</b> \$865.35 <b>Benefit:</b> 75% = \$649.05      85% = \$814.45	
75048	PERMANENT DENTITION TREATMENT - 2 ARCH (mandibular and maxillary) TREATMENT (correction and alignment) using fixed appliances, including supply of appliances - each subsequent 3 months of active treatment (including all adjustments and maintenance, and removal of the appliances) after the first for a maximum of a further 33 months <b>Fee:</b> \$221.90 <b>Benefit:</b> 75% = \$166.45      85% = \$188.65	
75049	RETENTION, FIXED OR REMOVABLE, single arch (mandibular or maxillary) - supply of retainer and supervision of retention <b>Fee:</b> \$259.75 <b>Benefit:</b> 75% = \$194.85      85% = \$220.80	
75050	RETENTION, FIXED OR REMOVABLE, 2-arch (mandibular and maxillary) - supply of retainers and supervision of retention <b>Fee:</b> \$501.40 <b>Benefit:</b> 75% = \$376.05      85% = \$450.50	
<b>JAW GROWTH GUIDANCE</b>		
75051	JAW GROWTH guidance using removable or functional appliances, including supply of appliances and all adjustments to appliances <b>Fee:</b> \$769.75 <b>Benefit:</b> 75% = \$577.35      85% = \$718.85	

## GROUP C2 - ORAL AND MAXILLOFACIAL SERVICES

*Note: (i) In this Group, benefit is only payable where the service has been rendered to a patient who has been referred by an accredited orthodontist.*

*(ii) While benefit is payable for simple extractions performed by a registered dental practitioner, benefit is only payable for surgical extractions and other surgical procedures where the service is rendered by a dental practitioner who has been approved by the Minister to provide oral surgical services. (see para CBI.5)*

## CONSULTATIONS

INITIAL PROFESSIONAL attendance in a single course of treatment by an accredited oral and maxillofacial surgeon where the patient is referred to the surgeon by an accredited orthodontist

*(See para CG. of explanatory notes to this Category)*

75150 Fee: \$66.60 Benefit: 75% = \$49.95 85% = \$56.65

PROFESSIONAL ATTENDANCE by an accredited oral and maxillofacial surgeon subsequent to the first professional attendance by the surgeon in a single course of treatment where the patient is referred to the surgeon by an accredited orthodontist

*(See para CG. of explanatory notes to this Category)*

75153 Fee: \$33.40 Benefit: 75% = \$25.05 85% = \$28.40

PRODUCTION OF DENTAL STUDY MODELS (not being a service associated with a service to which item 75153 applies) prior to provision of a service:

(a) to which item 52321, 53212 or 75618 applies; or

(b) to which an item in the series 52330 to 52382, 52600 to 52630, 53400 to 53409 or 53415 to 53429 applies; in a single course of treatment

*(See para CG. of explanatory notes to this Category)*

75156 Fee: \$59.35 Benefit: 75% = \$44.55 85% = \$50.45

## SIMPLE EXTRACTIONS

REMOVAL OF TOOTH OR TOOTH FRAGMENT not being treatment to which item 75400, 75403, 75406, 75409, 75412 or 75415 applies

*(See para CG. of explanatory notes to this Category)*

75200 Fee: \$42.75 Benefit: 75% = \$32.10 85% = \$36.35

REMOVAL OF TOOTH OR TOOTH FRAGMENT under general anaesthesia

*(See para CG. of explanatory notes to this Category)*

75203 Fee: \$64.15 Benefit: 75% = \$48.15 85% = \$54.55

REMOVAL OF EACH ADDITIONAL TOOTH OR TOOTH FRAGMENT at the same attendance at which a service to which item 75200 or 75203 applies is rendered

*(See para CG. of explanatory notes to this Category)*

75206 Fee: \$21.25 Benefit: 75% = \$15.95 85% = \$18.10

## SURGICAL EXTRACTIONS

SURGICAL REMOVAL OF ERUPTED TOOTH

*(See para CG. of explanatory notes to this Category)*

75400 Fee: \$128.30 Benefit: 75% = \$96.25 85% = \$109.10

SURGICAL REMOVAL OF TOOTH with soft tissue impaction

*(See para CG. of explanatory notes to this Category)*

75403 Fee: \$147.30 Benefit: 75% = \$110.50 85% = \$125.25

SURGICAL REMOVAL OF TOOTH with partial bone impaction

*(See para CG. of explanatory notes to this Category)*

75406 Fee: \$167.95 Benefit: 75% = \$126.00 85% = \$142.80

SURGICAL REMOVAL OF TOOTH with complete bone impaction

*(See para CG. of explanatory notes to this Category)*

75409 Fee: \$190.15 Benefit: 75% = \$142.65 85% = \$161.65

SURGICAL REMOVAL OF TOOTH FRAGMENT involving soft tissue only

*(See para CG. of explanatory notes to this Category)*

75412 Fee: \$106.20 Benefit: 75% = \$79.65 85% = \$90.30

ORAL AND MAXILLOFACIAL		ORAL AND MAXILLOFACIAL	
75415	SURGICAL REMOVAL OF TOOTH FRAGMENT involving bone (See para CG. of explanatory notes to this Category) <b>Fee:</b> \$128.30	<b>Benefit:</b> 75% = \$96.25	85% = \$109.10
<b>OTHER SURGICAL PROCEDURES</b>			
75600	SURGICAL EXPOSURE, STIMULATION AND PACKING OF UNERUPTED TOOTH (See para CG. of explanatory notes to this Category) <b>Fee:</b> \$180.65	<b>Benefit:</b> 75% = \$135.50	85% = \$153.60
75603	SURGICAL EXPOSURE OF UNERUPTED TOOTH for the purpose of fitting a traction device (See para CG. of explanatory notes to this Category) <b>Fee:</b> \$212.30	<b>Benefit:</b> 75% = \$159.25	85% = \$180.50
75606	SURGICAL REPOSITIONING OF UNERUPTED TOOTH (See para CG. of explanatory notes to this Category) <b>Fee:</b> \$212.30	<b>Benefit:</b> 75% = \$159.25	85% = \$180.50
75609	TRANSPLANTATION OF TOOTH BUD (See para CG. of explanatory notes to this Category) <b>Fee:</b> \$317.00	<b>Benefit:</b> 75% = \$237.75	85% = \$269.45
75612	SURGICAL PROCEDURE for intra oral implantation of osseointegrated fixture (first stage) (See para CG. of explanatory notes to this Category) <b>Fee:</b> \$392.30	<b>Benefit:</b> 75% = \$294.25	85% = \$341.40
75615	SURGICAL PROCEDURE FOR FIXATION of trans-mucosal abutment (second stage of osseointegrated implant) (See para CG. of explanatory notes to this Category) <b>Fee:</b> \$145.20	<b>Benefit:</b> 75% = \$108.90	85% = \$123.45
<b>OTHER</b>			
75618	PROVISION AND FITTING OF A BITE RISING APPLIANCE or DENTAL SPLINT for the management of temporomandibular joint dysfunction syndrome (See para CG. of explanatory notes to this Category) <b>Fee:</b> \$180.30	<b>Benefit:</b> 75% = \$135.25	85% = \$153.30
75621	THE PROVISION AND FITTING OF SURGICAL TEMPLATE in conjunction with orthognathic surgical procedures in association with: (a) an item in the series 52342 to 52375; or (b) item 52380 or 52382 (See para CG. of explanatory notes to this Category) <b>Fee:</b> \$180.30	<b>Benefit:</b> 75% = \$135.25	85% = \$153.30

## GROUP C3 - GENERAL AND PROSTHODONTIC SERVICES

*Note: Benefit is payable for services listed in this Group where they are rendered by a State registered dental practitioner*

## CONSULTATIONS

ATTENDANCE BY AN ELIGIBLE DENTAL PRACTITIONER involving consultation, preventive treatment and prophylaxis, of not less than 30 minutes' duration each attendance to a maximum of 3 attendances in any period of 12 months

75800 Fee: \$64.15 Benefit: 75% = \$48.15 85% = \$54.55

## PROSTHODONTIC

PROVISION AND FITTING OF ACRYLIC BASE PARTIAL DENTURE, including retainers 1 TOOTH

75803 Fee: \$256.75 Benefit: 75% = \$192.60 85% = \$218.25

2 TEETH

75806 Fee: \$301.10 Benefit: 75% = \$225.85 85% = \$255.95

3 TEETH

75809 Fee: \$356.55 Benefit: 75% = \$267.45 85% = \$305.65

4 TEETH

75812 Fee: \$396.15 Benefit: 75% = \$297.15 85% = \$345.25

5 TO 9 TEETH

75815 Fee: \$483.30 Benefit: 75% = \$362.50 85% = \$432.40

10 TO 12 TEETH

75818 Fee: \$570.45 Benefit: 75% = \$427.85 85% = \$519.55

PROVISION AND FITTING OF CAST METAL BASE (cobalt chromium alloy) PARTIAL DENTURE including casting and retainers

1 TOOTH

75821 Fee: \$459.50 Benefit: 75% = \$344.65 85% = \$408.60

2 TEETH

75824 Fee: \$530.85 Benefit: 75% = \$398.15 85% = \$479.95

3 TEETH

75827 Fee: \$610.10 Benefit: 75% = \$457.60 85% = \$559.20

4 TEETH

75830 Fee: \$673.50 Benefit: 75% = \$505.15 85% = \$622.60

5 TO 9 TEETH

75833 Fee: \$823.95 Benefit: 75% = \$618.00 85% = \$773.05

10 TO 12 TEETH

75836 Fee: \$942.80 Benefit: 75% = \$707.10 85% = \$891.90

PROVISION AND FITTING OF RETAINERS not being a service associated with a service to which item 75803, 75806, 75809, 75812, 75815, 75818, 75821, 75824, 75827, 75830, 75833 or 75836 applies each retainer

75839 Fee: \$21.25 Benefit: 75% = \$15.95 85% = \$18.10

ADJUSTMENT OF PARTIAL DENTURE not being a service associated with a service to which item 75803, 75806, 75809, 75812, 75815, 75818, 75821, 75824, 75827, 75830, 75833 or 75836 applies

75842 Fee: \$31.70 Benefit: 75% = \$23.80 85% = \$26.95

RELINING OF PARTIAL DENTURE by laboratory process and associated fitting

75845 Fee: \$158.50 Benefit: 75% = \$118.90 85% = \$134.75

REMODELLING AND FITTING OF PARTIAL DENTURE of more than 4 teeth

75848 Fee: \$190.15 Benefit: 75% = \$142.65 85% = \$161.65

REPAIR TO CAST METAL BASE OF PARTIAL DENTURE 1 or more points

75851 Fee: \$95.10 Benefit: 75% = \$71.35 85% = \$80.85

75854	ADDITION OF A TOOTH OR TEETH to a partial denture to replace extracted tooth or teeth including taking of necessary impression Fee: \$95.10 Benefit: 75% = \$71.35      85% = \$80.85
-------	---